

APPLICATIONS

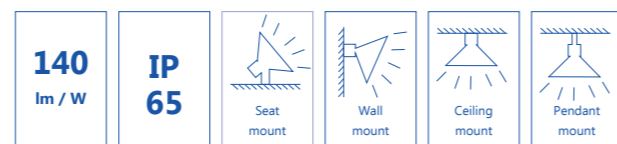
Suitable for illumination of ports, shipyards, stadiums, airports, railways and other indoor or outdoor locations.



NTC9280 LED SPOTLIGHT

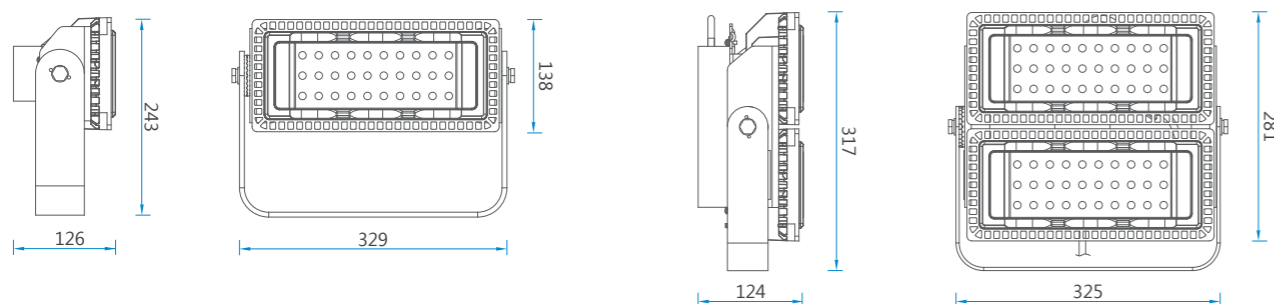


- LED light source featuring high luminous efficacy and energy saving
- Four types of light distributions, fulfilling requirements of different locations
- Suitable for seat mount, wall mount, ceiling mount and pendant mount, etc.
- Degree of protection: IP 65



DIMENSION DRAWINGS

*all dimensions in mm

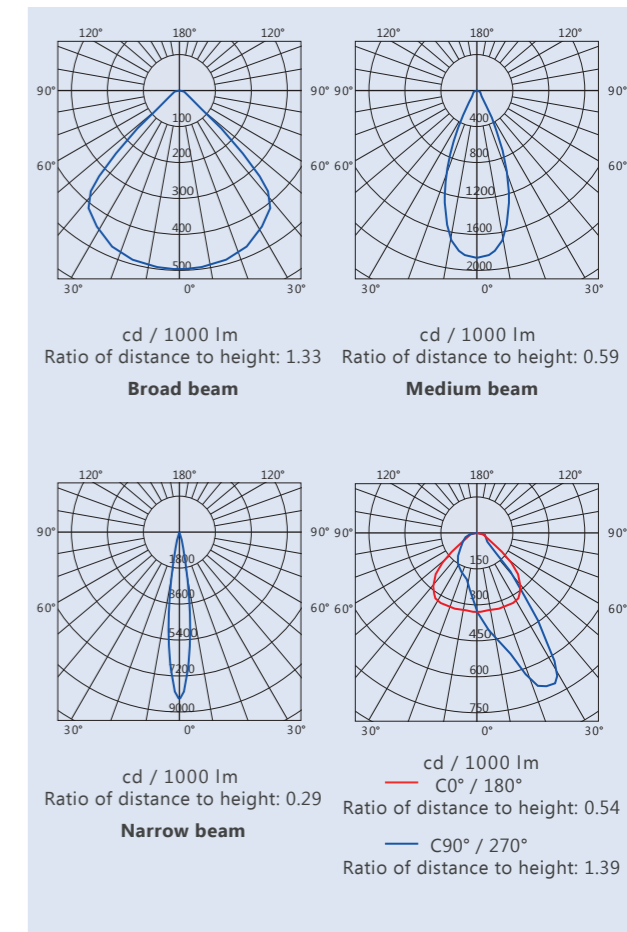


TECHNICAL DATA

Certification	
International approvals	SASO, CCC
Conformity to standards	IEC60598
Material	
Body material	Aluminum alloy with epoxy powder coating
Diffuser	Polycarbonate
Light source	
Brand	CREE
Wattage	110 W, 200 W
Type	LED
Luminous flux	140 lm / W
Life	100000 h
Rated voltage	220 V - 240 V AC 50 Hz / 60 Hz
Class of insulation	Class I
Cable entry	G3/4
Operating temperature	-20 °C to +40 °C
Degree of protection	IP 65
Corrosion-proof class	WF2

PHOTOMETRIC DATA

NTC9280 LED 110 W, 200 W photometric data
The data from CREE lamp
Luminous intensity distribution cd / 1000 lm



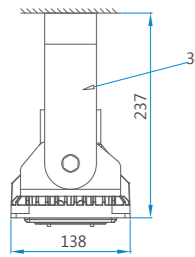
We can provide lighting design and data by professional lighting software based upon simulated site situation on request.

SELECTION TABLE

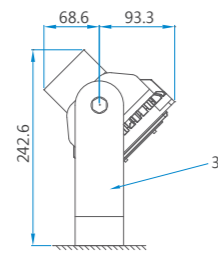
Model	Lamp power (W)	Lamp type (W)	Operating current (A)	Color temperature (K)	Weight (kg)
NTC9280/110/LED	110	LED	0.7	2700 - 3300 (warm white)	5.5
NTC9280/110/LED	110	LED	0.7	5000 - 6000 (cool white)	5.5
NTC9280/200/LED	200	LED	0.7	2700 - 3300 (warm white)	8.35
NTC9280/200/LED	200	LED	0.7	5000 - 6000 (cool white)	8.35

MOUNTING TYPE

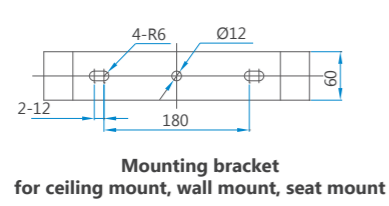
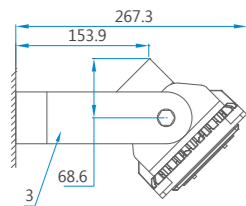
Ceiling mount (110W)



Seat mount (110W)

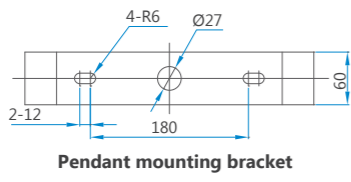
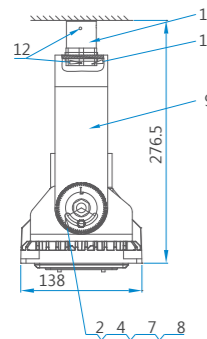


Wall mount (110W)



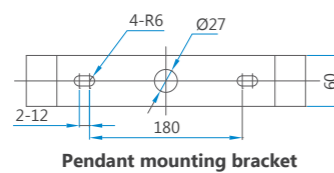
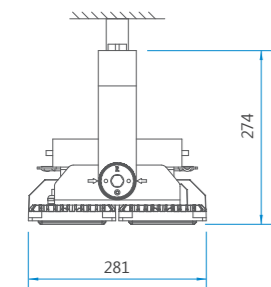
Mounting bracket for ceiling mount, wall mount, seat mount

Pendant mount (110W)



Pendant mounting bracket

Pendant mount (200W)



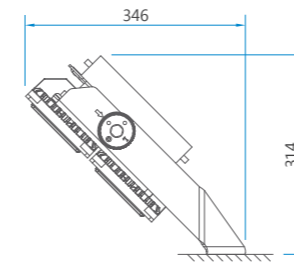
Pendant mounting bracket

*all dimensions in mm

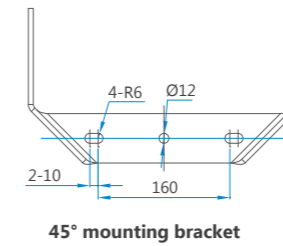
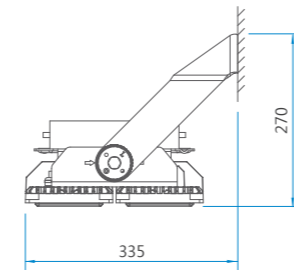
Accessories for ceiling mount, wall mount, seat mount				
No.	Name	Spec.	Qty.	Remark
1	Setting dial		1	Provided by manufacturer
2	Cross-head screw	M4 × 8	2	
3	6 mm U bracket		1	
4	Hex cap bolt	M10 × 40	2	
5	Hex nut	M10	2	
6	Standard spring washer	10	2	
7	Flat washer	10	2	

Accessories for pendant mount				
No.	Name	Spec.	Qty.	Remark
1	Hex cap bolt	M10 × 40	2	Provided by manufacturer
2	Hex cap bolt	M5 × 20	2	
3	Hex nut	M10	2	
4	Hex nut	M5	2	
5	Standard spring washer	10	2	
6	Flat washer	10	2	
7	Standard spring washer	5	2	
8	Flat washer	5	2	
9	4 mm U bracket		1	Accessories should be ordered separately.
10	Pipe mount connector	G3/4	1	
11	G3/4 pipe adapter	G3/4	1	
12	Set screw	M4 × 6	2	

Seat mount (200W)

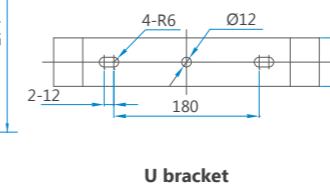
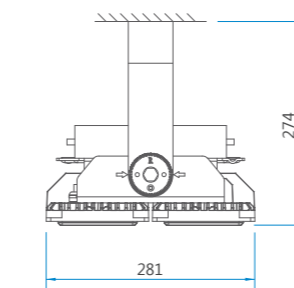


Wall mount (200W)



45° mounting bracket

Ceiling mount (200W)



U bracket

Accessories for ceiling mount, wall mount, seat mount				
No.	Name	Spec.	Qty.	Remark
1	Setting dial		1	Provided by manufacturer
2	Cross-head screw	M4 × 8	2	
3	6 mm U bracket		1	
4	Hex cap bolt	M10 × 40	2	
5	Hex nut	M10	2	
6	Standard spring washer	10	2	
7	Flat washer	10	2	
8	45° mounting bracket		1	

Accessories				
No.	Name	Spec.	Qty.	Remark
1	Expansion bolt (with nut, flat washer and spring washer)	M14 × 100	2	Provided by user
2	Accessory package for indoor mounting use		1	Accessories should be ordered separately.
3	U bracket for indoor mounting use		1	
4	Accessory package for outdoor mounting use		1	Accessories should be ordered separately.
5	U bracket for outdoor mounting use		1	

SPARE PARTS

Name	Picture	Ordering code	Weight (KG)
Light source - 110 W		1311010303	0.112
Light source - 200 W		1311010335	0.130
LED driver - 110 W		1305020049	0.472
LED driver - 200 W		1305020051	0.556